



Accessibility Document

Karijini Eco Retreat

To support the accessible community in making informed travel decisions for their individual needs.

Contents

Pre-arrival, arrival and reception	1
Entry	1
Internal Spaces	2
External Paths	2
Public Toilets/Adult change facilities	2
Accommodation.....	3
Camping	3
Tents.....	3
Tent with access ramp - 13	3
Bathrooms.....	4
Deluxe	4
Deluxe Plus.....	5
Luxury.....	6

Pre-arrival, arrival and reception

The business has the following in place to support guests during pre-arrival, arrival and

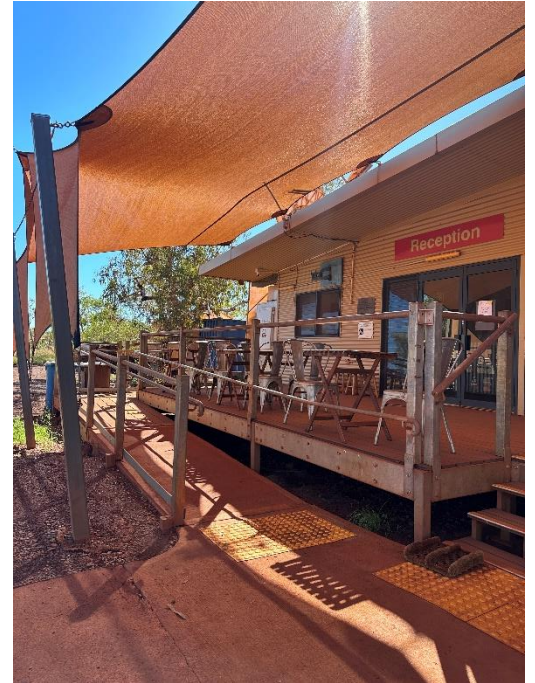
reception

- There is a reception/public entryway.
- Seating available at reception
- Luggage assistance upon request

The following steps are in place to ensure that people with fatigue related to their disability

are not disadvantaged by long wait times:

Our Maintenance Team will arrange a car to assist with guests to check into room.



Entry

The business has the following amenities/systems in place for entry

- A path of access to the building is slip resistance and even
- A path of access to the building is clear of obstruction
- Open entry doors
- Door jams/doors are of a contrasting colour to surrounding walls
- Door handles are of a contrasting colour to the door
- Signage is written in a contrasting colour
- The entry door is a minimum of 850mm wide
- There a clear space of at least 1500mm x 1500mm in front of all doors.
- The entrance door mats have a thickness less than 13mm and a width of 7500mm or

Greater



Internal Spaces

- Clear and unobstructed routes through buildings
- Clear routes between buildings with uneven surfaces due to dirt pathways
- Interior walls are matte or low sheen
- Floors, walls, counters and furniture are of contrasting colours
- Tableware/glassware contrast with the table surface or tablecloth
- Floor surfaces are hard
- Seating is available for guests unable to stand for long periods

External Paths

External paths of travel have the following amenities are in place

- Surfaces are compact dirt and rock including roadways and pathways
- Pathways are wider than 900mm but are edged with spinifex grass
- Pathways are dimly lit, additional lighting is recommended in the way of a headtorch

Car Park and Access amenities

The business has the following Car Park and Access amenities

- A drop off zone located outside the main reception building
- Ramped access from the car park to the entrance

Public Toilets/Adult change facilities

Public Toilets/Adult change facilities have the following amenities are in place

- There is an accessible toilet for public use
- Toilets are located in a separate building and are linked by dirt pathways
- The door is at least 850mm wide
- There is a minimum of 850mm beside the toilet
- Handrails are fitted
- The toilet seat is 460mm above the floor



- The toilet seat of a contrasting colour to the floor

Accommodation

Accommodation types include campsites and multiple variations of Eco glamping tents.

Camping

There is one campsite loop “Wattle Loop’ that has access to the above Public Toilet facilities. Facilities are a minimum of 100m from the closest camp site

Tents

There is currently one tent with an access ramp

*We are currently installing ramps to all Tent categories, so enquiry for new options

Tent with access ramp - 13

- There is ramp access greater than 850mm and fitted with handrail
- Tent entry is via a tent panel which requires unzipping and re zipping
- Entrance to the main room is greater than 850mm with a tent panel lip of 50mm high



Tent 13 – Deluxe Tent

Bathrooms

Deluxe

The bathrooms have the following facilities/amenities in place

- All heating appliances and hot water pipes are protected or insulated
- All shower, bath and basin taps are clearly differentiated between hot and cold
- Fixtures and fittings have rounded edges
- The hot water is thermostatically controlled to 41 degrees
- The door is at least 850mm wide
- There is a 700mm beside the toilet
- Handrails are fitted in the shower
- There is 1100mm of clear space in front of the toilet
- The toilet seat is a contrasting colour to the floor
- The toilet seat is 460mm above the floor
- There is a portable shower head on flexible hose



Deluxe Tent; Bathroom Entry



Deluxe Tent; Shower Entry

Deluxe Plus

The bathrooms have the following facilities/amenities in place

- All heating appliances and hot water pipes are protected or insulated
- All shower, bath and basin taps are clearly differentiated between hot and cold
- Fixtures and fittings have rounded edges
- The hot water is thermostatically controlled to 41 degrees
- The door is at least 740mm wide
- There is a minimum of 850mm beside the toilet
- There is a minimum of 1100mm of clear space in front of the toilet
- The toilet seat is a contrasting colour to the floor
- The toilet seat is 460mm above the floor
- A door is fitted to the shower
- A door is fitted to the showers with an outward swing at width of 530 mm



Deluxe Plus Tent; Bathroom entry



Deluxe Plus Tent; Shower entry

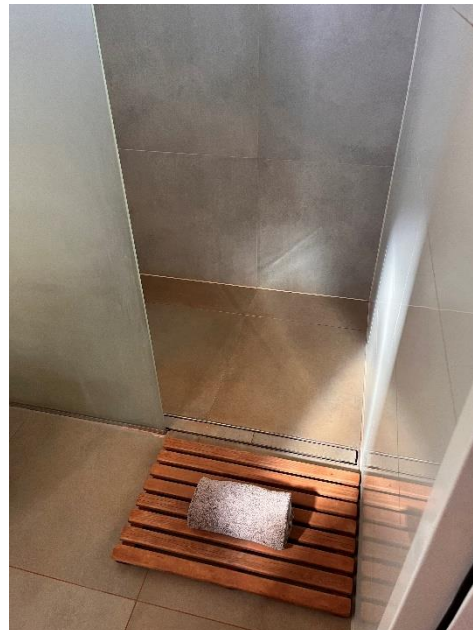
Luxury

The bathrooms have the following facilities/amenities in place

- All heating appliances and hot water pipes are protected or insulated
- All shower, bath and basin taps are clearly differentiated between hot and cold
- Fixtures and fittings have rounded edges
- The hot water is thermostatically controlled to 41 degrees
- The door is at least 800mm wide
- There is a minimum of 850mm beside the toilet
- Handrails are fitted
- There is a 1100mm of clear space in front of the toilet
- The toilet seat is a contrasting colour to the floor
- The toilet seat is 460mm above the floor
- There is no door is fitted to the shower



Luxury Tent; Bathroom entry



Luxury Tent; Shower entry